

# Registration

Device registration is the process of telling the ActivHub how many devices there are in the classroom, and their names.

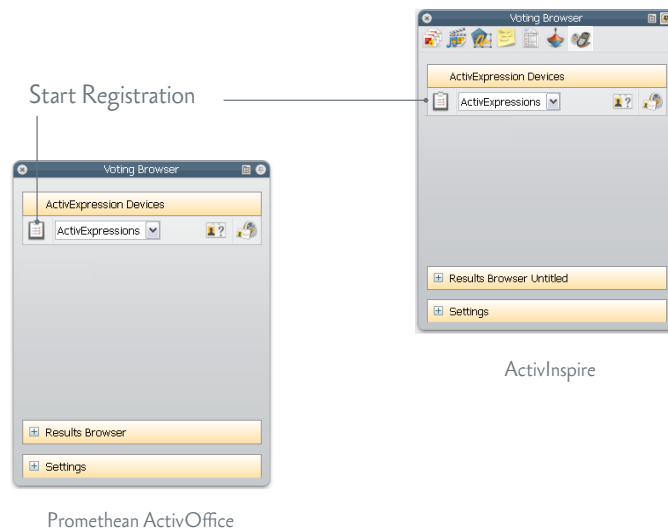
You need to register devices to your ActivHub *before* you begin a voting session.

For details of language options, see the later section [Change the device language](#).

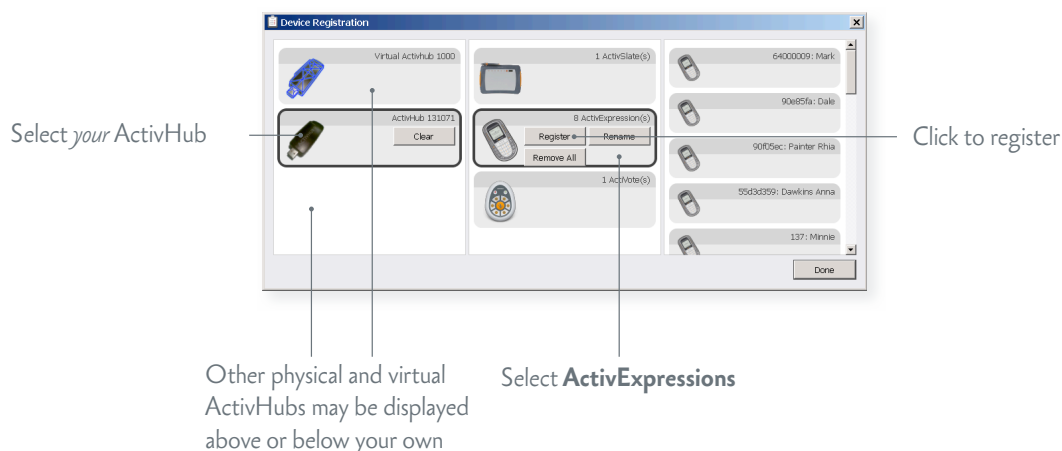
## ON THE COMPUTER

Start registration from the **Voting Browser** in ActivInspire or Promethean ActivOffice.

Make sure **ActivExpressions** is selected.



In Device Registration in ActivInspire or Promethean ActivOffice, make sure that you select your ActivHub, then select **ActivExpressions** before you click **Register**.



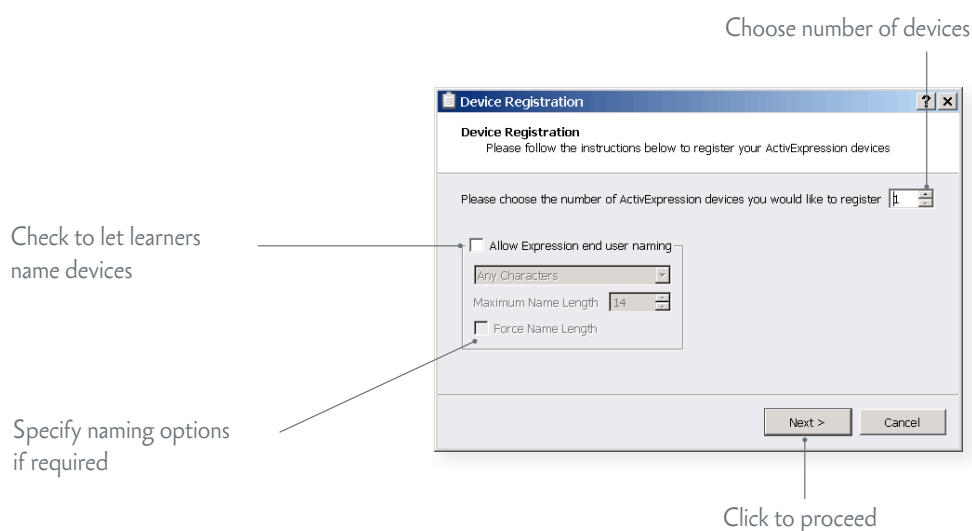
## ActivExpression 2

During registration, ActivInspire and Promethean ActivOffice allocate names to devices.

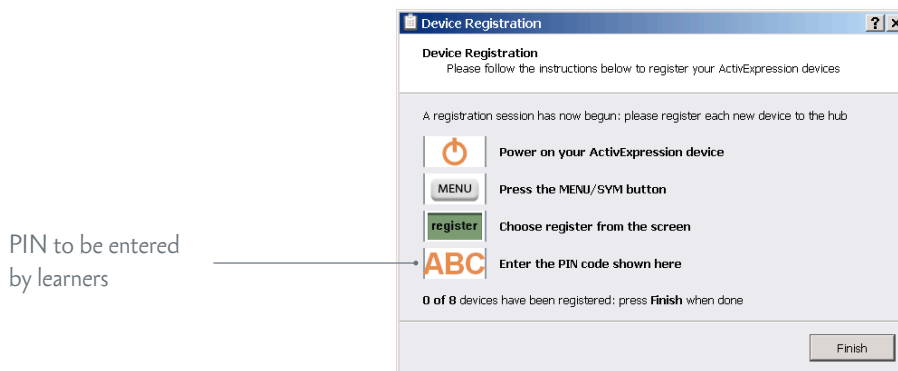
You have two choices at this time:

- The quickest way is to let the software allocate default names during registration.
- Alternatively, you can let your learners name their ActivExpression devices during registration.

Whichever option you choose, devices must be powered on and within transmission range of the ActivHub.

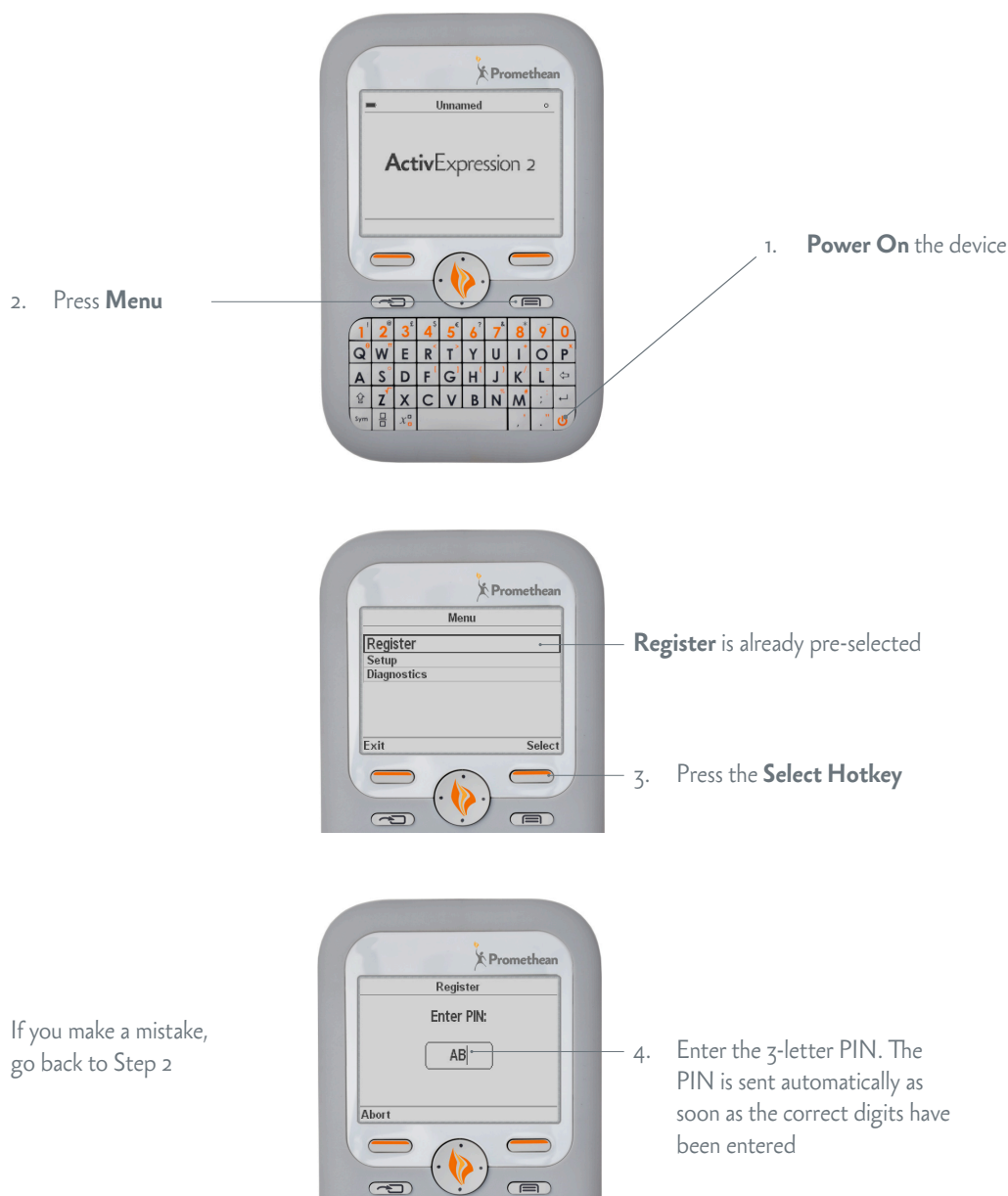


ActivInspire or Promethean ActivOffice displays a 3-letter PIN code. All learners must enter the correct PIN.



## ON THE DEVICES

To register, learners must enter the 3-letter PIN generated in ActivInspire or Promethean ActivOffice on their devices.

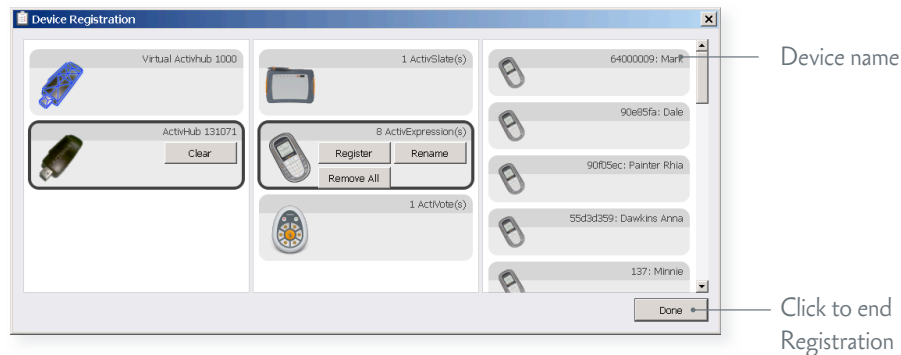


## ON THE COMPUTER

As soon as all required learners send the correct PIN, Device Registration in ActivInspire or Promethean ActivOffice shows their devices as registered.

## ActivExpression 2

Each device name is displayed on the right of the Device Registration dialog.

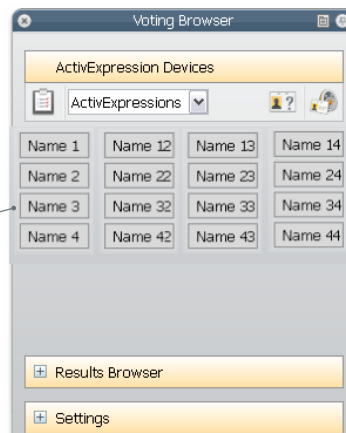


Check the **Voting Browser** in ActivInspire or Promethean ActivOffice at any time to see the list of devices registered to your ActivHub.

You can add more devices to the register as necessary, *but only when there is no voting session in progress.*

Start registration, specify the number of additional devices, then complete the steps as shown before.

Registered devices



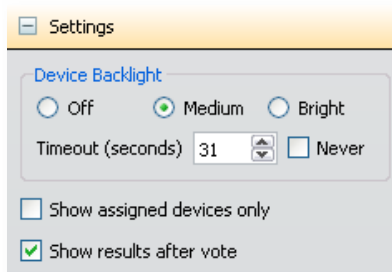
Promethean ActivOffice

### Save energy!

With ActivInspire 1.6 or later, you can also switch backlighting on and off, and control length and intensity of lighting of registered devices.

In the **Voting Browser**, click **Settings**. Then adjust the timeout and backlighting as appropriate. Any changes becomes effective immediately.

If a device is not powered on when you change a setting, the change becomes effective next time the device is powered on while you run ActivInspire.



ActivInspire